



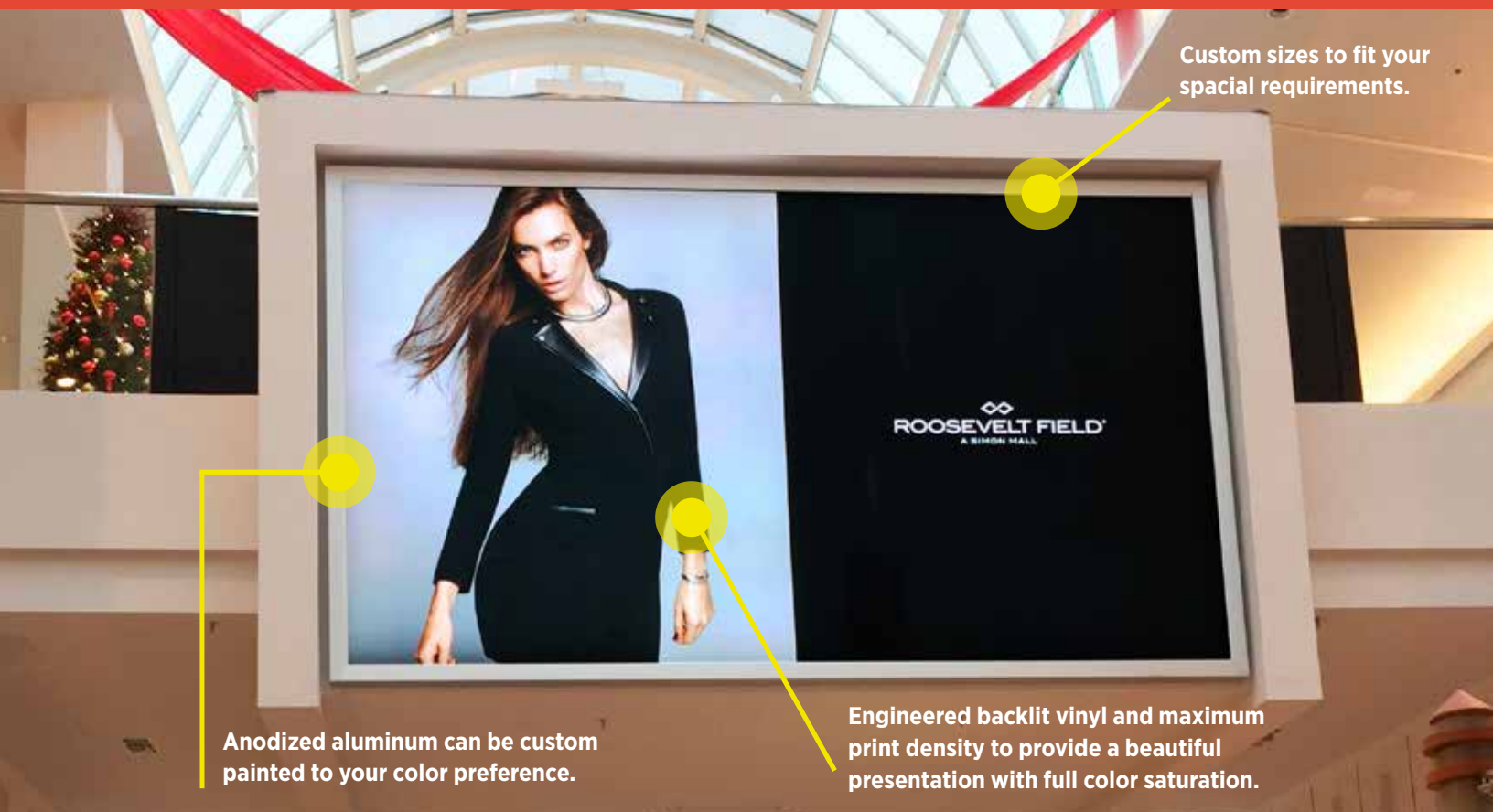
# BriteWall™

## WALL-MOUNTED, BACKLIT LED DISPLAY, FOR INTERIOR OR EXTERIOR USE

BriteWall is the industry's leading backlit display system. The frame is available in a variety of sizes and powder-coated finishes, while a spring-tensioned component makes installing and swapping banners easy. This LED light box system uses a modest one third the power of traditional light box systems and lasts three times as long.

### TOP PRODUCT BENEFITS

- 1 **Bright, energy efficient LED** panels provide balanced illumination at a stunning 5700° K full spectrum output.
- 2 **Save money** with low, efficient power consumption of only 6.5 watts/sq ft.
- 3 Easy to swap out vinyl graphics allows for a **fresh look when you want it.**
- 4 Great for interior and exterior use. **Special coating and UV protected backlit vinyl** provides weather-resistance for exterior application.
- 5 Highly customizable frame. **Choose from a variety of sizes and powder-coated finishes.**



Custom sizes to fit your spacial requirements.

Anodized aluminum can be custom painted to your color preference.

Engineered backlit vinyl and maximum print density to provide a beautiful presentation with full color saturation.



## BRITEWALL | SPECIFICATIONS

<b>Voltage</b>	120 or 227 VAC input, 20 amp circuit
<b>Voltage output</b>	24V DC constant
<b>Brightness</b>	11,000 Lux (Lumens/ft <sup>2</sup> )
<b>LED lifespan</b>	50,000 hours (Twice as long as traditional light box systems)
<b>Weight (with banner)</b>	4 lbs/sq. ft.
<b>Warranty</b>	3 years
<b>UL listed</b>	US & Canada   UL 48 Electrical Signs File #E362117

## BRITEWALL | STANDARD SIZES

Standard sizes are detailed below. In addition to these standard sizes, BriteWall can be custom configured to nearly any size up to 12' H x 16' W. For larger sizes, please inquire about our large format Ovio BriteWall systems.

Product	Actual Unit Size	Unit Depth	Frame Width	Graphic Size	Live Area	Net Weight
<b>BriteWall 4x4</b>	49"h x 49"w	3.3"	3.5"	45.375" x 45.375"	41"h x 41"w	64 lbs.
<b>BriteWall 4x6</b>	49.5"h x 70"w	3.3"	3.5"	45.875" x 66.375"	41.5"h x 62"w	96 lbs.
<b>BriteWall 5x5</b>	59.5"h x 59.5"w	3.3"	3.5"	55.875" x 55.875"	51.5"h x 51.5"w	100 lbs.
<b>BriteWall 6x6</b>	70"h x 70"w	3.3"	3.5"	66.375" x 66.375"	62"h x 62"w	144 lbs.
<b>BriteWall 8x8</b>	91"h x 91"w	3.3"	3.5"	87.375" x 87.375"	84"h x 84"w	256 lbs.
<b>BriteWall 10x10</b>	115"h x 115"w	3.3"	3.5"	111.375" x 111.375"	107"h x 107"w	480 lbs.
<b>BriteWall 12x12</b>	138.25"h x 138.25"w	3.3"	3.5"	134.625" x 134.625"	130.25"h x 130.25"w	576 lbs.
<b>Custom</b>	Up to 144"h x 192"w	3.3"	3.5"	Custom	Custom	Custom



### NEED PRINT?

Britten prints everything in-house, making planning and coordinating your project easier than ever. We use a high-quality backlit vinyl for indoor applications and a special vinyl (that meets UL and UV demands) for outdoor applications. Contact Britten Studios to order media at 800-426-9496.



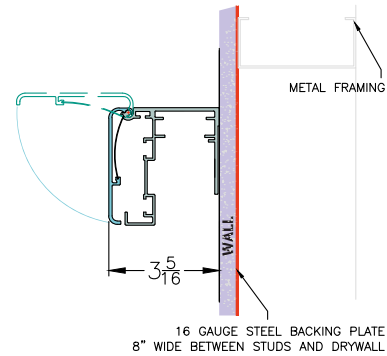
## BRITEWALL | MOUNTING CONDITIONS

**How is the BriteWall mounted?** Unit must be mounted to a solid, complete surface (e.g., a wall of appropriate construction of where the unit is to be mounted). Can be mounted to wood, brick, block, metal, EIFS surfaces.

**When should the surface be prepared?** To help with your planning process and project timeline, all wall preparation should be made prior to the arrival of BriteWall and the Britten install crew.

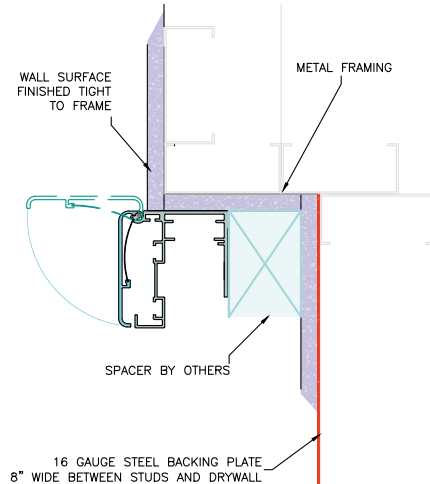
### SURFACE MOUNT

- Easiest to install; requires little to no wall preparation or finishing
- Frame extends 3.3" off the wall



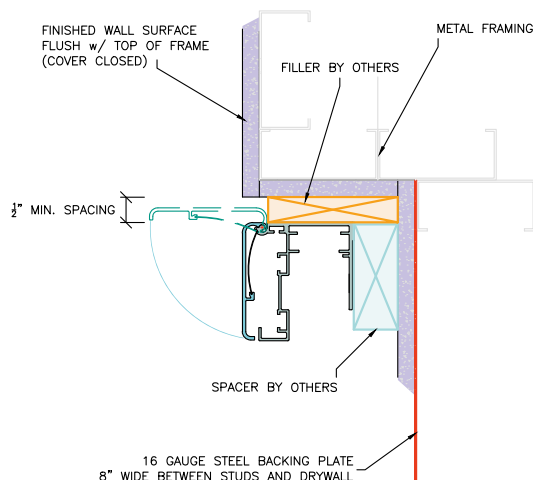
### INSET MOUNT

- Inset into wall cavity
- Cleanest finish to the frame (no gap)
- Note: In this application, Britewall unit should be mounted first before finishing the wall to the unit



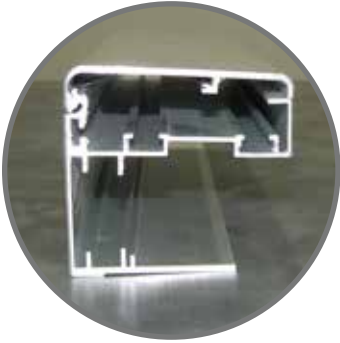
### FLUSH MOUNT

- Requires 1/2" gap to allow frame cover to flip open
- Frame front (when closed) is flush with wall
- For a clean finish, a filler can be added post-install to close the cavity between the unit and wall

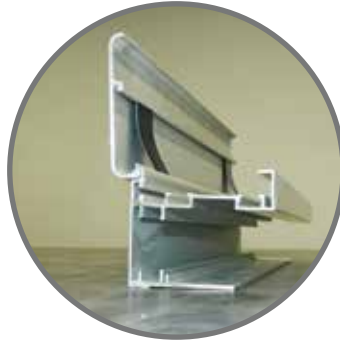




## BRITTEWALL | COMPONENTS



**Frame cover closed**  
(side view)



**Frame cover open**  
(side view)



**Spring detail**  
Spring components result in perfectly-tensioned banners.



**LED grid detail**  
Evenly-spaced LEDs result in balanced illumination.

---

## BRITTEWALL | ARTWORK DESIGN TEMPLATES

Each BriteWall size will be provided with its appropriate artwork design template. Call Britten for more information.

---

## BRITTEWALL | WARRANTY

Britten Services, Inc. offers a conditional 3-year warranty against product design and manufacturing assuming proper installation and proper operational conditions. During the warranty period, Britten Services, Inc. will repair or replace the unit. The warranty only applies to the original purchaser and is in lieu of all other warranties expressed or implied for a period of one year from the date of purchase.

Britten Studios, Inc. will not warranty the following: LABOR associated with the removal or installation of the unit; DAMAGE caused by misuse, neglect abuse, accidents, alterations, corrosive environments, and any other abnormal service conditions.

Claims against the warranty must include: pictures of the installation; written description of the problem; and return material authorization issues by Britten Services, Inc.