

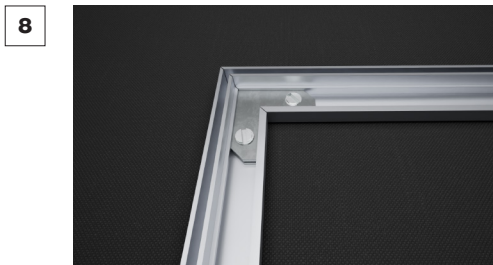
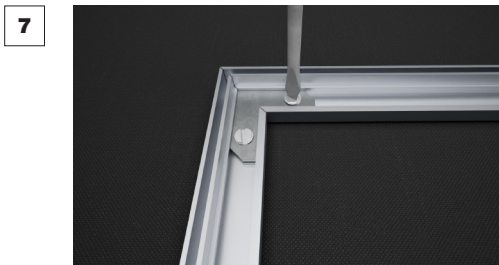
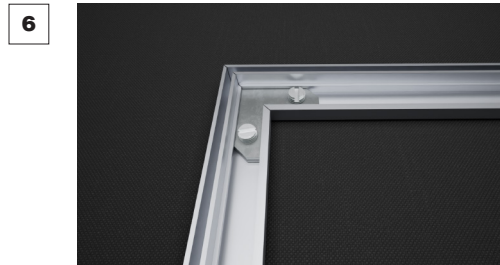
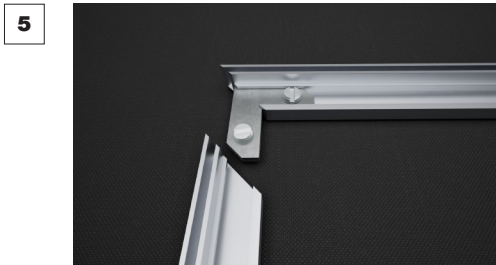
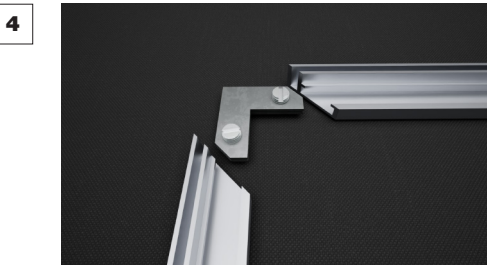
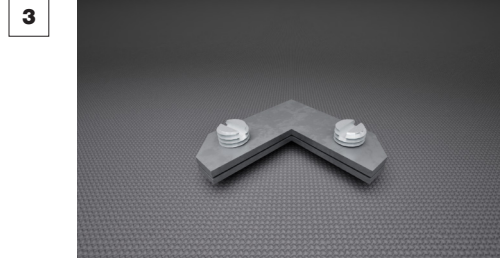
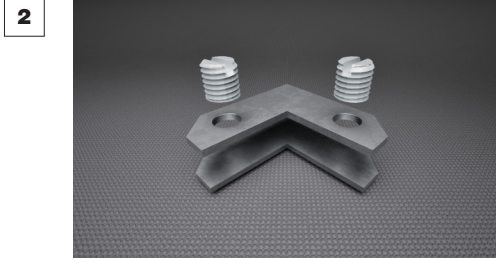
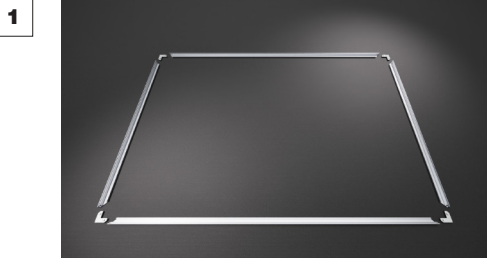
ASSEMBLY AND INSTALLATION INSTRUCTIONS

WHAT YOU'LL NEED

- + Extrusion pieces (quantity will vary by frame size)
- + Corner Pieces with screws x4
- + Corner Pieces no screws x4
- + Screwdriver *not included

ASSEMBLE FRAME

- + Unpack all the frame components and lay out the (4) aluminum frame segments on the floor in a rectangular configuration with the channels facing upward.
- + Grab two corner (L-shape) pieces, one with screws and one without.
- + Slide the corner piece into the channels of two frame segments to make a corner.
- + Repeat the above step for all 4 corners, then fasten screws with a screwdriver.



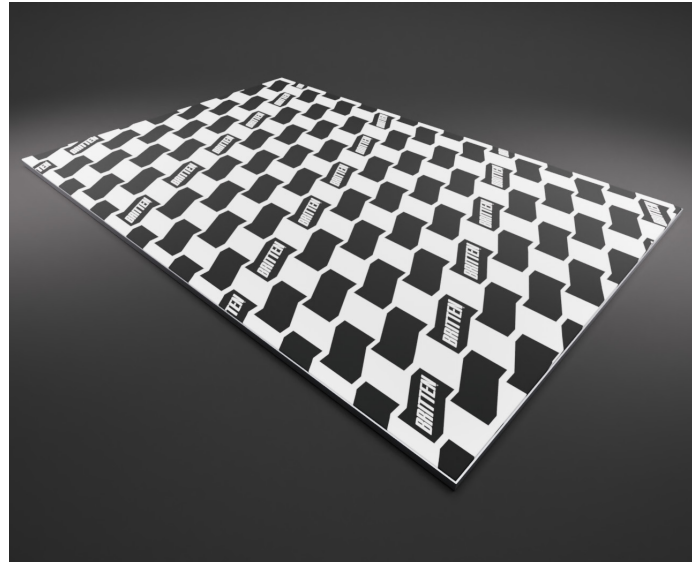
FABRIC PRINT INSTALLATION INSTRUCTIONS

INSTALL THE FABRIC PRINT INTO THE FRAME.

Lay the frame on floor to install fabric panels (this is not necessary, but often helps).

1. Install the BOTTOM SECTION of the silicone edging first.
2. Install the top section second.
3. Install both sides.
4. If needed, a typical credit card will help with the edges. Begin by inserting the rubber silicon edging into the channel edge of the frame edge. Start at the center of each side and work to the corners. The print is fabric and designed to stretch for best presentation.

Once all (4) sides of the fabric print have been installed into the channel, smooth out the fabric along each side.



Finished Thinfinitiy™ Frame with print included

