A modern, multi-story building with a unique, angular design. The building's facade is covered in a dark, textured material, likely the TexClad textile cladding system, which is shown in various shades of brown and grey. The building has large glass windows and balconies. The sky is blue with some clouds. The overall aesthetic is modern and architectural.

Introducing the all-new TexClad™
textile cladding system by Britten Inc.,
the first turn-key integrated textile
enclosure system.

TexClad™ takes parking structures from eyesore to elegance.

The high-end 50% open textile cladding
& facade system you've been waiting for.

Contact us to discuss how
TexClad™ can work with your next
project. 855-763-8205



TexClad™ By Britten Inc.

**New construction,
renovations and
special structures.**

**A truly lightweight
building façade.**

TexClad™ visualized

TexClad™ by Britten Inc. has revolutionized how architects view façades through the use of textiles in their projects.

TexClad™ employs our patented hardware system coupled with high-strength textiles and exclusive ColorArmor™ coating. Crafted from large-format textiles, the TexClad™ system offers vibrant imagery with a seamless presentation that competitors are unable to replicate—at a price point other products can't match.

💰 Tensioned fabric is lightweight and incredibly cost-effective compared to all metal mesh façade options.



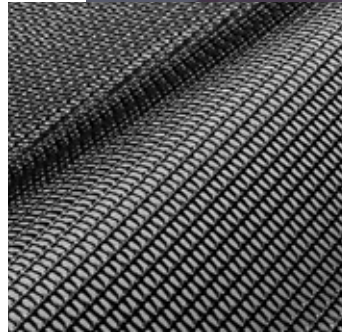
Modern Design

Transform any structure into an art piece. Utilize existing branding and colors specified by architects and designers to give any structure a modern look.



Made With The Best Materials

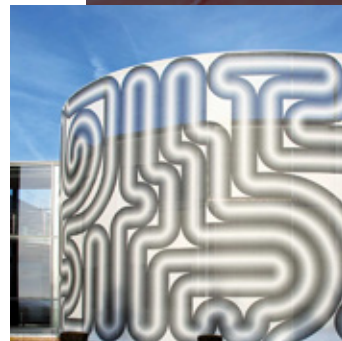
Create a multilayer effect with a breathable waterproof membrane overlaid by our signature Architectural Mesh to create an added dimension.



Premium and Luxury

Allow those inside to maintain a great view while presenting a fresh face to existing or new construction.

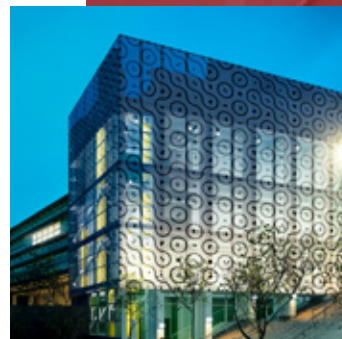
As an added benefit, TexClad™ may be digitally printed, providing endless visual opportunities.



Design For Environment

Made with high-strength engineered textiles coated with ColorArmor™ enabling graphics to withstand up to 30 years of outdoor exposure.

It's the perfect energy-efficient balance of mesh permeability and UV protective coatings.





Endless Applications

Whether new construction or a building retrofit, TexClad™ will dramatically expand the capabilities for architects and designers.

Renovate any existing structures or integrate TexClad™ textile building cladding into a new development.

Add appealing character to any plan or ordinary building. These versatile architectural building façades are designed to last and provide compelling dimensionality to nondescript structures.



Cost Effective

Less than half the cost of traditional metal perforated mesh panels.



Quality Engineering

Architectural-grade aluminium mounting and tensioning hardware that meets all fire-rating standards and adaptable to building air permeability requirements.



Structurally Stunning

Compatible modular hardware able to create nearly any configuration of architectural façade and guaranteed to withstand the weather and look amazing for 30+ years.

High on energy efficiency. Low on maintenance costs.

In addition to the superior strength and over 30 year expected lifespan, TexClad™ provides shade and privacy for the building inhabitants - **and most importantly - printable and changeable decor to hide those unsightly parking garages!**

The TexClad™ hardware system is custom made to fit any parking structure façade or configuration. Engineered for maximum textile hold and tensile retention, your new mural or façade pattern will remain taut in all conditions, no matter what!



In Action: Interlock District of Atlanta

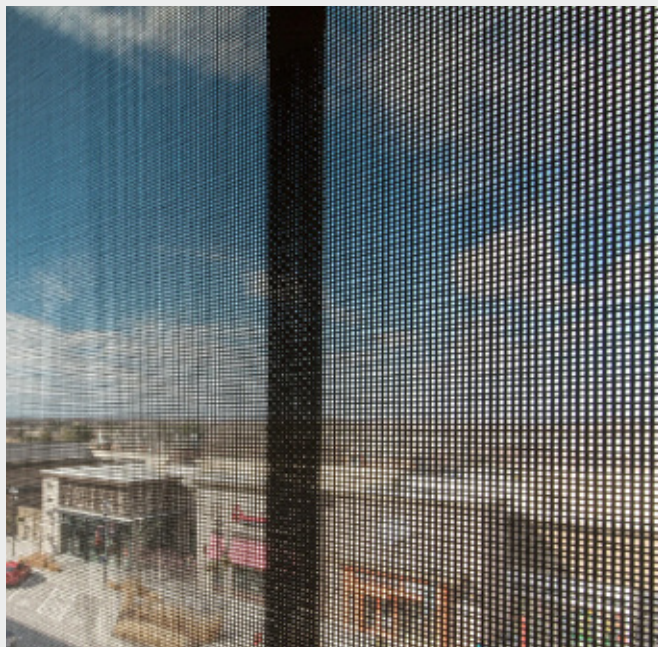
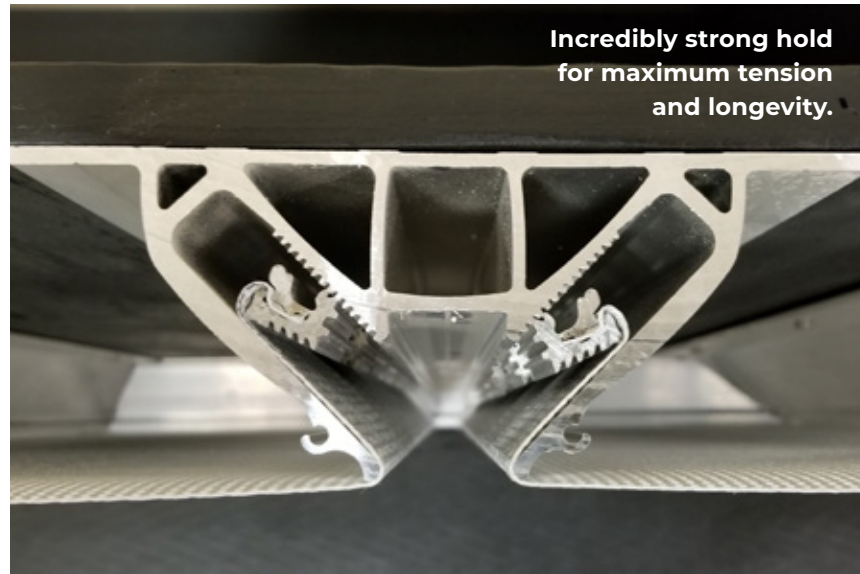
A recent project by developer Terwilliger Pappasin utilizes our TexClad™ technology to generate neighborhood hype while tastefully camouflaging the final construction phases of the parking garage. During this time, the unsightly construction dust and debris was artfully concealed while getting the community excited about a project the way an "Excuse Our Mess" sign never could.



In Action: Downtown Bethesda

New art installations were unveiled using Tex-Clad™ on this public parking garage. "Public art installations contribute to vibrant downtown communities and raise the profile of the arts by making art exciting and accessible," Montgomery County Executive Marc Elrich said in a statement. "We hope to encourage more partnerships like this in the future."

**Deliver
maximum
endurance
with the
Britten Inc
TexClad™
process.**

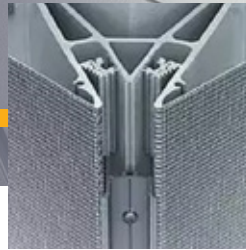


CLEVER SYSTEMS FOR SUCCESS

With the TexClad™ Textile Cladding system, Britten Inc delivers everything you need, from the complete mounting system, panels, and all the necessary accessories from a single source - us!

So you not only efficiently save time with your purchase and installation, you can also be confident that you will receive weather resistant, attractive, durable and UV resistant panels and accessories with proven TexClad™ quality.

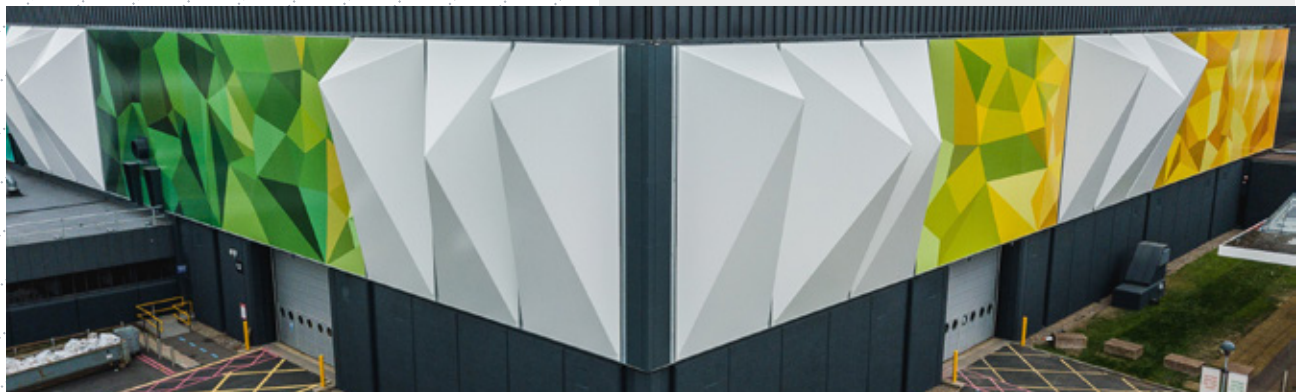
- Create rectangle, square, curved or geometric shapes.
- Perfect for parking decks, garage structure screens, and miscellaneous utility enclosures.
- Upgrades plain office buildings into compelling architectural monuments.
- Innovative façade embellishments for hotels, retail & residential buildings.



More than a façade. Create a parking structure that will make the neighbors jealous.

TexClad™ is a fully integrated, turn-key building façade system *that is changing how the world views parking structures.*

- ▲ MODERNIZES AND BEAUTIFIES OLD GARAGES EASILY.
- ▲ GRAFFITI RESISTANT AND TEFLON™ - COATED MESH KEEP YOUR GRAPHICS AND PATTERNS CLEAN.
- ▲ ENGINEERED TO MEET OR EXCEED ALL FLAME RESISTANCE AND WEATHER-RESISTANCE BUILDING CODES, EVEN IN THE HARSHTEST ENVIRONMENTS.
- ▲ 30 YEAR MINIMUM EXPECTED LIFESPAN AND 10 YEAR REPLACEMENT GUARANTEE ON ALL TEXTILE AND HARDWARE BY BRITTEN INC.



TRANSFORM YOUR NEXT
PROJECT WITH **TEXCLAD™**

CONTACT US TODAY

Speak directly with a TexClad specialist to discuss your next project. Call 855-763-8205

Recognizing the need is the primary condition for design.

Your trustworthy partner

We are the only company who offers a turn-key, fully integrated textile enclosure system for new builds and retrofits - and we're with you from start to finish.

40 years in the business. Britten Inc. is a 100% vertically integrated company, meaning we control the entire process, adhering to our own terms, including our own warranty. From planning, to printing to installation. We're there for you.

Interested? Get a quote today.

Call today to schedule a 10-minute introductory video call to discuss your next project.

With just a quick look at your elevation and dimensions, we'll provide quick, turn-key quotes for your consideration.

Mesh and hardware samples available upon request.



Email all requests to:
texclad@britteninc.com



1.855.763.8205



Headquarters

2322 Cass Rd
Traverse City, MI 49684

Serving all of the USA



See our website at [Britteninc.com/Texclad](https://www.britteninc.com/Texclad) to download more information.