



who we are

Britten is a veteran-owned creative production house dedicated to delivering innovative signage, displays, and event branding solutions that make our customers stand out in a crowd. For over 40 years, we've leveraged our state-of-the-art design, printing, fabrication, and manufacturing capabilities to propel high-impact campaigns and promotional ideas into the world. Always on time, on strategy, and on budget, we build the stuff that helps people, communities, and businesses flourish and prosper.



MADE IN THE
USA ★

**making record-breaking
events possible since 1985.**

2024 NFL DRAFT (Detroit, MI)





SHOUT YOUR MESSAGE FROM THE WINDOWS, WALLS, AND EVERYWHERE ELSE.

Get the community pumped about a construction project the way an "Excuse Our Mess" sign never could. Transforming your entire building into an advertising or promotional space is a surefire way to raise your brand's profile into the stratosphere. Big as all get out, building wraps cover-up renovations and unsightly architecture, gluing the eyes of passersby who can't help but notice and think, *Whoa! That's cool.*

From high-rise structures, museums, hospitals, to luxury buildings like New York's 250' x 400' Plaza Hotel, our fearless team of creatives, fabricators, and certified installers (available nationwide) have covered it all. Partner with us and get the state-of-the-art printing and manufacturing capability that delivers maximum brand impact at any-size.

TOP PRODUCT FEATURES

- For branding as big as the great outdoors, Britten's proprietary AdMesh™ material allows for 70% of the wind to blow through, and prevents large-format prints from appearing wrinkled.
- Command attention with messaging that defies wind and nasty weather. Patented AdMesh™ lets natural light, sound, and even wind pass through so your message stands long (or tall) on a breezy day.



Size: 40' H x 483' W on 70% Mesh (19,320 sq. ft.)





Size: 69.6' H x 57.3' W on 30% AD Mesh (3988 sq. ft.)



Size: 54' H x 47' W on 22oz Double Sided Blackout Vinyl (2,538 sq. ft.)

Facade with Custom Foam 3D Letters



Size: 83.5' H x 158' W on 30% Mesh (13,193 sq. ft.)





Size: 62' H x 20' W (1240 sq. ft.) on 70% Mesh





Size: 160' H x 180' W overall (28,800 sq. ft.)

Project Details: In 2020, Arlington city officials teamed up with local non-profit, Performing Statistics, to design a public art installation that would advocate for alternatives to youth incarceration and feature the voices of young activists.

"This is the first-ever art installation of this scale on a government building," says Sam Schwartzkopf, Communications Analyst for the mayor's office. "The project would not have been possible without the know-how and enthusiasm of the Britten team. Thanks to their willingness to try something new and ability to get it done right, Richmond is able to celebrate its youth on an unprecedented scale."





Size: 100' H x 100' W (10,000 sq. ft.)

Project Details: Scaffolding wrap on the corner of Madison Avenue and E 23rd produced for Manhattan's largest office landlord. Architectural Mesh exceeds the fire and safety criteria of common netting.





Size: 68' H x 205' W / 57' H x 38' W (16,100 sq. ft.)
on 30% Mesh

Project Details: The colorful shroud concealed construction while getting the community excited about a project the way an “Excuse Our Mess” sign never could. With durable connection points pre-sewn into the wrap, the onsite install took hours instead of days.

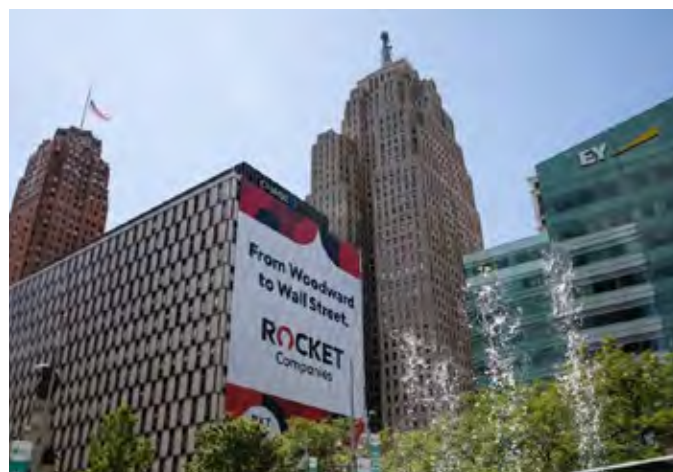




Size: 147' H x 123.5' W (18,237 sq. ft.)

Project Details: The big sign in downtown overlooking Campus Martius Park reads, "From Woodward to Wall Street. Rocket Companies."

Billionaire developer Dan Gilbert rang the opening bell at the New York Stock Exchange the morning his Rocket Companies IPO hit the market at \$18 a share.





Completion Date: January 2020

Size: 95' H x 80' W (7,600 sq. ft.) on 70% Mesh

Project Details: Pulling an all-nighter to complete the install on-time, the Britten team not only delivered but also managed to do it all cheaper than if KnowBe4's creative team had sourced the printing and install locally. "2019 was a super successful year for KnowBe4 and we're looking forward to another record-setting year in 2020," KnowBe4 CEO and founder, Stu Sjouwerman said in a news release.





Size: 35' H x 280' W (8,500 sq. ft.)

Project Details: Formerly the historic Latham Hotel, 3000 M St. is a 10-story, 125,000-square-foot corner property featuring 280 feet of wraparound frontage on 30th Street and M Street, the prime retail corridor in Washington, D.C.

Thor Equities plans to redevelop 3000 M St. including the retail space fronting M Street to create a premier flagship location with soaring ceiling heights.





Size: 41' H x 117' W (7,000 sq. ft.)

Project Details: This building on the corner of Park Avenue & 63rd Street faces one of the busiest stretches of road anywhere in Manhattan. The original building façade was completely redrawn by hand, scanned in several pieces and digitally printed in several panels. Much more attractive than bare scaffolding, the artistic rendering that shields the renovations from the public looks exactly like the building behind it.





Size: In total, 329,808 sq. ft. of 70% mesh material was printed, shipped and installed in about 2 months' time.

Project Details: These four buildings were completely wrapped on all sides using a swing stage. The largest banners on the east & west sides of 1851 Bell St. measured over 102' H x 260' W, each building is 12 to 14 stories high.





BEFORE



AFTER

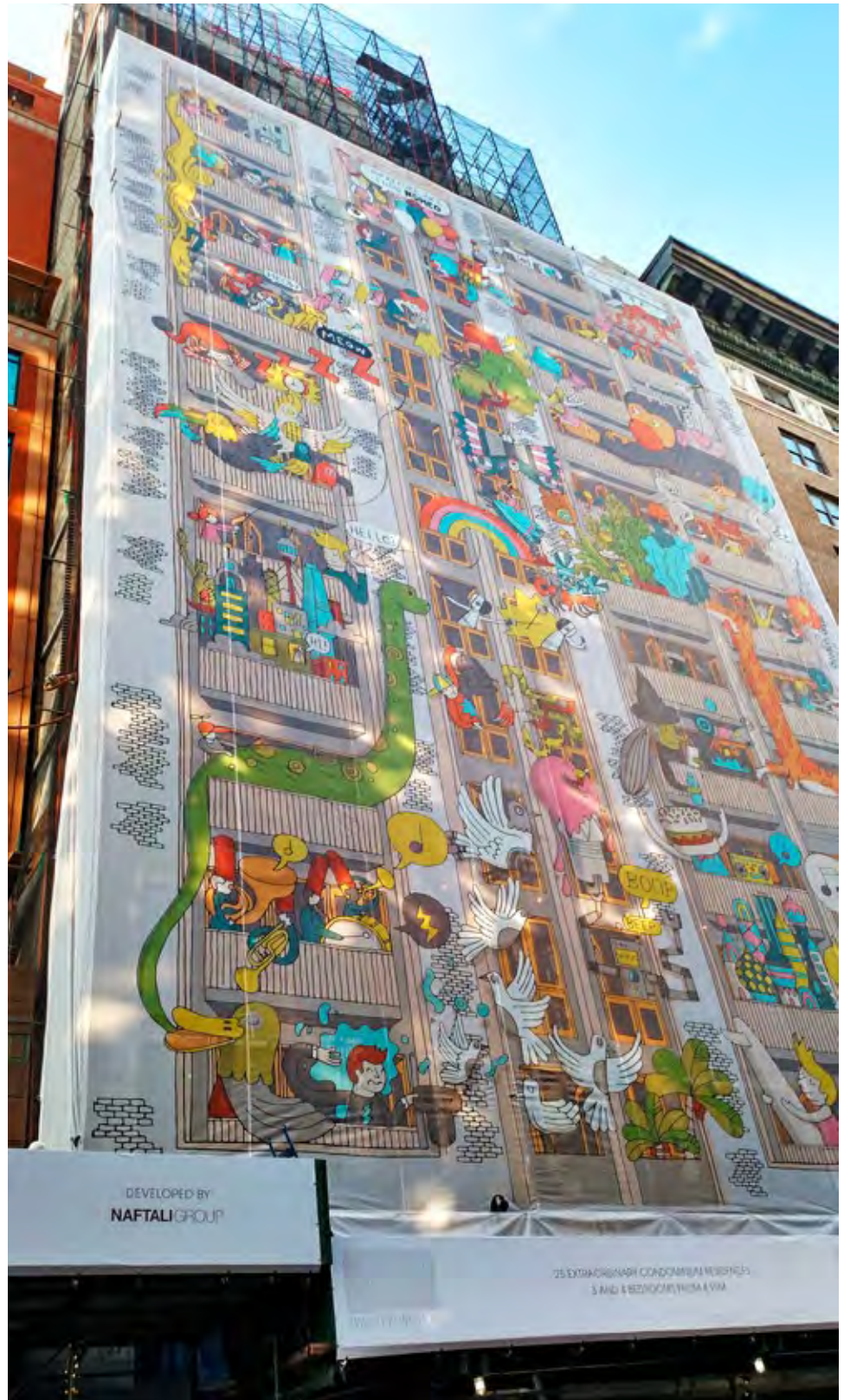
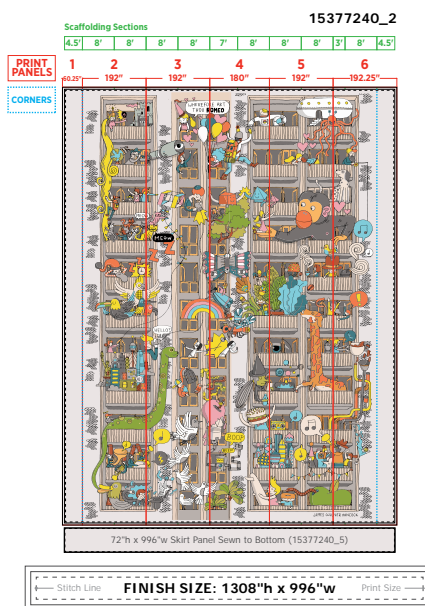
Size: 60' H x 18' W (1,080 sq. ft.)

Project Details: The artwork for this banner was created in house by Britten's design team, aligning perfectly with the dimensions of the existing architecture. The 70% Mesh banner measures 716" H x 224" W, was installed from the top of the roof and secured in a matter of hours.



Size: 109' H x 83' W (9,047 sq. ft.)

Project Details: This banner was printed in 6 panels to match the width of each section of scaffolding. The colorful artwork was provided as a single vector file, capable of scaling to any size.





Size: 90' H x 172' W (15,562 sq. ft.)

Project Details: The historic building is a protected New York landmark, and became the company's new flagship store at the junction of Broadway and Fifth Avenue next to Madison Square Park. Renovation was overseen by Foster + Partners.





Size: 189' H x 137' W (25,893 sq. ft.)

Project Details: Britten Services was on hand to install this massive banner (189' H x 137' W) which was printed on several sections of wind permeable AdMesh™ material.

Installed on the Crowne Plaza Hotel facing the Cobo Center, the giant building wrap welcomed guests to the North American International Auto Show in downtown Detroit.





Size: 55,216 sq. ft. of 70% mesh material was fabricated, shipped and installed on all four sides of this seven story building (including over 3,000 linear feet of C-Rail).

Project Details: This seven story building was wrapped in consecutive layers of mesh material. Compared to a giant “Sugar Cube”, this massive white backdrop was used as a projection screen at night for artwork by the Downtown Development of Miami.





65' H x 150' W (front), 65' H x 25' W (sides),
11,375 total sq. ft.

Project Details: Cadillac debuted the ATS to the press in the United States in January 2012, and assembles the ATS at the Grand River Assembly plant in Lansing, Michigan.

General Motors spent \$190 million USD to upgrade the plant for ATS production, and hired a second shift of workers.

The original wrap was installed in 2013, and the graphic was refreshed in 2016 and again in 2020 to reflect the new model.





Size: 28.5' H x 201.5' W (5,743 sq. ft.) with frame

Project Details: Local employees of the General Motors posed in front of the plant as the very first Chevrolet Corvette C7 Stingray rolled off of the assembly lines in Bowling Green, KY. Corvette Kentucky Assembly Plant tours begin again in October 2013, with the "Precision Never Rests" tagline welcoming visitors to the facility.

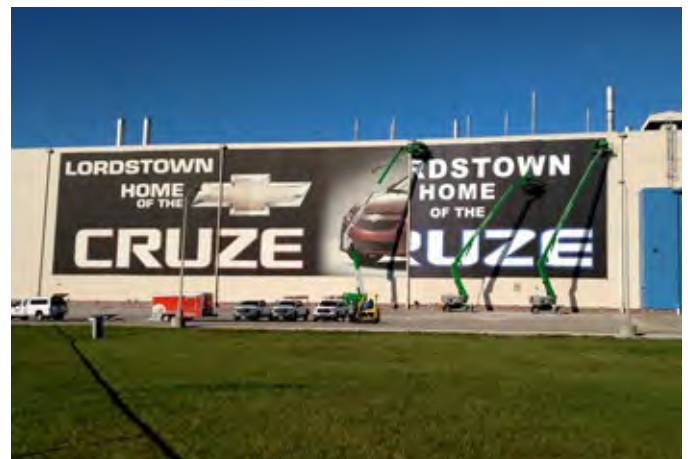




Size: 61' H x 259' W (15,616 sq. ft.)

Project Details: In April 2016, Britten Services replaced a huge banner showing the new model of Chevy Cruze which is seen by an estimated 33,000 Ohio Turnpike drivers who pass by the General Motors plant every day.

The mesh covering is over 60' tall and nearly 260' wide (printed in three massive sections) and covers the side of the plant where 5,000 men and women have been making the small, fuel efficient car since 2008. The Cruze is Chevy's best-selling car, surpassing 3.5 million global sales and can be found in over 115 countries.

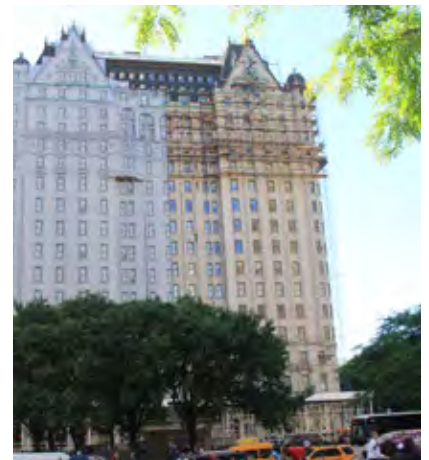




Size: 220' H x 290' W
(65,000 sq. ft.)

Project Details: The artwork was drawn by hand, scanned & digitized, and stitched together into one massive composite.

A total of 36 panels (up to 16' W each) were installed to two faces of the scaffolding over the course of three days.





Size: 147' H x 123.5' W (18,237 sq. ft.)

Project Details: When Quicken Loans bought the Chase Tower in downtown Detroit, they renamed it the Qube and relocated 4,000 of the company's employees to the facility.

The company made a bold statement with this building wrap, reflecting their investment in the city and renewed downtown opportunity. This installation was completed by rapellers who connected the sections of the banner on their way down the building.





Size: 44' H x 160' W (14,801 sq. ft.)

Project Details: Western Michigan University unveiled a four-story by 160-foot piece of art that will cover two sides of its downtown Grand Rapids facility during the opening weekend of ArtPrize.

"The Epic Broncos" was created by Durham, N.C.-based artist Revere La Noue, incorporating the shape of Michigan into the face of the bronco. The black curtain was dropped precisely at 8:41pm, revealing the new artwork underneath.



FEATURES/APPLICATIONS

- Digitally printed and great for indoor or outdoor use.
- Most often used outdoor, and when wind blow-through is of utmost importance.
- This speaker scrim is great for scaffolding, concert speakers, banners in windy areas, huge banners or building wraps.

TECHNICAL DETAILS

Item	Data		Unit	Method
Yarn	1000 x 1000		Denier	DIN60001
Net structure	12 x 12		Thread / Inch	DIN53853
Net weight	110		g/sq.m	DIN53352
PVC coated	150		g/sq.m	DIN53352
Product weight	260		g/sq.m	DIN53352
Thickness	—		mm	DIN53353
Products width	1.02 ~ 5.00		m	—
Tearing strength	L	268	N/5cm	DIN53363
	W	270		
Tensile strength	L	1045	N/5cm	DIN53354
	W	1050		
Elongation value	L	26	%	DIN53354
	W	26		
Peeling strength	1017		N/5cm	DIN53357
Light transmission	—		%	ASTM D 1003
Temperature	-30°C ~ +70°C		°C	DIN53372
Expired time	6 ~ 12 months			—
Flame retardant	pass			DIN75200
Anti-wicking	without			
Anti-frost	without			
Anti-mildew	without			
Acrylic lacquer	without			



FEATURES/APPLICATIONS

- This lightweight, durable mesh vinyl is digitally printed and ideal for large scale projects.
- Microperforation allows for 30% of air to pass through.
- It's install-friendly, and cost-effective for shipping.
- This Mesh Supreme is great for fencing, large banners, backdrops & building wraps.

TECHNICAL DETAILS

Item	Data		Unit	Method
Yarn	1000 x 1000		Denier	DIN60001
Net structure	18 x 9		Thread / Inch	DIN53853
Net weight	130		g/sq.m	DIN53352
PVC coated	160		g/sq.m	DIN53352
Product weight	290		g/sq.m	DIN53352
Thickness	—		mm	DIN53353
Products width	1.02 ~ 5.00		m	
Tearing strength	L	415	N/5cm	DIN53363
	W	620		
Tensile strength	L	935	N/5cm	DIN53354
	W	1683		
Elongation value	L	26	%	DIN53354
	W	26		
Peeling strength	1017		N/5cm	DIN53357
Light transmission	—		%	ASTM D 1003
Temperature	-30°C ~ +70°C		°C	DIN53372
Expired time	6 ~ 12 months			
Flame retardant	pass			DIN75200
Anti-wicking	without			
Anti-frost	without			
Anti-mildew	without			
Acrylic lacquer	without			



**Test Report**

No. AJHG1505004179FB

Date: JUN.08, 2015

Page 1 of 3

SOYANG TECH. CO., LTD.

WEST 19TH FLOOR, YONGTONG INFORMATION PLAZA, NO 141 HUANCHENG BEI ROAD,
HANGZHOU CITY, ZHEJIANG PR., CHINA

The following sample(s) was / were submitted and identified on behalf of the client as:

Sample Description: PVC COATED MESH**Type/Style:** MESH-6**Color:** WHITE**Supplier:** SOYANG TECH. CO., LTD.**Manufacturer:** SOYANG TECH. CO., LTD.**Country of Origin:** CHINA**Country of Destination:** NORTH AMERICA**Test Requested:**

Determine the flame resistance in accordance with test method 1 of NFPA 701:2010 Standard Methods of Fire Tests for Flame Propagation of Textiles and Films

Test Results: -- See attached sheet --

Conclusion: The tested sample "As received" **meets** the requirements of Test Method 1 of NFPA 701:2010.

Test Period:

Sample Receiving Date : MAY.29, 2015

Test Performing Date : MAY.29, 2015 TO JUN.04, 2015

Signed for and on behalf of
SGS-CSTC Co., Ltd. Anji Branch

Allen Zou
Technical Manager



This document is issued by the Company subject to its General Conditions of Service printed overleaf, available on request or accessible at <http://www.sgs.com/en/Terms-and-Conditions.aspx> and, for electronic formal documents, subject to Terms and Conditions for Electronic Documents at <http://www.sgs.com/en/Terms-and-Conditions/Terms-e-Document.aspx>. Attention is drawn to the limitation of liability, indemnification and jurisdiction issues defined therein. Any holder of this document is advised that information contained hereon reflects the Company's findings at the time of its intervention only and within the limits of Client's instructions, if any. The Company's sole responsibility is to its Client and this document does not exonerate parties to a transaction from exercising all their rights and obligations under the transaction documents. This document cannot be reproduced except in full, without prior written approval of the Company. Any unauthorized alteration, forgery or falsification of the content or appearance of this document is unlawful and offenders may be prosecuted to the fullest extent of the law. Unless otherwise stated the results shown in this test report refer only to the sample(s) tested and such sample(s) are retained for 30 days only.

Attention: To ensure the authenticity of testing/inspection reports & certificates, please contact us by telephone: (86-755) 8307 1442 or e-mail: CS@china.sgs.com

No. 301, Sunlight Road, 2 Block, Sunlight Industry Zone, Anji County, Zhejiang Province, China 313300 t (86-572) 5018025 f (86-572) 5018029 www.sgs.com.cn
中国·浙江·安吉县阳光工业园二区阳光大道301号 邮编: 313300 t (86-572) 5018025 f (86-572) 5018029 s sgs.china@sgs.com

Member of the SGS Group (SGS SA)



Test Report

No. AJHG1505004179FB

Date: JUN.08, 2015

Page 2 of 3

I. Test Conducted

This test was conducted in accordance with test method 1 of NFPA 701:2010 Standard Methods of Fire Tests for Flame Propagation of Textiles and Films.

II. Details of tested sample

Material / Color	Mesh / White
Area density	206g/m ²
Products configuration	Single Layer
Size of sample *	150mm × 400mm 10pcs

* With the length parallel to the lengthwise direction of the material

III. Conditioning

Prior to testing, the sample was conditioned,

at least 30 minutes at 105°C±3°C (220°F±5°F)

IV. Test results

Specimen No	Mass of specimen Before test (g)	Mass of specimen After test (g)	Mass loss (Percent)	After flame time (s)	Burning time on floor (s)
1	12.02	11.62	3.33	0	0
2	12.17	11.66	4.19	0	0
3	12.34	11.59	6.08	0	0
4	12.38	11.69	5.57	0	0
5	12.12	11.67	3.71	0	0
6	12.09	11.71	3.14	0	0
7	12.30	11.61	5.61	0	0
8	12.19	11.65	4.43	0	0
9	12.15	11.63	4.28	0	0
10	12.27	11.66	4.97	0	0
Mean	12.20	11.65	4.53	0	0

SD =1 3SD =3 Mean + 3SD =7.53

SD – Standards deviation

To be continued....



This document is issued by the Company subject to its General Conditions of Service printed overleaf, available on request or accessible at <http://www.sgs.com/en/Terms-and-Conditions.aspx> and, for electronic format documents, subject to Terms and Conditions for Electronic Documents at <http://www.sgs.com/en/Terms-and-Conditions/Terms-a-Document.aspx>. Attention is drawn to the limitation of liability, indemnification and jurisdiction issues defined therein. Any holder of this document is advised that information contained herein reflects the Company's findings at the time of its intervention only and within the limits of Client's instructions, if any. The Company's sole responsibility is to its Client and this document does not exonerate parties to a transaction from exercising all their rights and obligations under the transaction documents. This document cannot be reproduced except in full, without prior written approval of the Company. Any unauthorized alteration, forgery or falsification of the content or appearance of this document is unlawful and offenders may be prosecuted to the fullest extent of the law. Unless otherwise stated the results shown in this test report refer only to the sample(s) tested and such sample(s) are retained for 30 days only.

For more information on SGS services, please contact us at telephone: (86-573) 501825 or email: china@sgs.com

No. 301, Sunlight Road, 2 Block, Sunlight Industry Zone, Anji County, Zhejiang Province, China 313300 t: (86-572) 501825 f: (86-572) 501825 www.sgs.com.cn
中国·浙江·安吉县阳光工业园区二区阳光大道301号 邮编: 313300 t: (86-572) 501825 f: (86-572) 501825 s: sgs.china@sgs.com

Member of the SGS Group (SGS SA)

SGS

Test Report

No. AJHG1505004179FB

Date: JUN.08, 2015

Page 3 of 3

Observations:

Vigorousness of burning	No
Material molten dripping	Yes
Odor smoke	Yes

Criteria for test method 1 (Chapter 10):

1. Fragments or residues of specimens that fall to the floor of the test chamber shall not continue to burn for more than an average of 2 seconds per specimen for the sample of 10 specimen.
2. The average weight loss of the 10 specimen in a sample shall be 40 percent or less.
3. No individual specimen's percent mass loss shall deviate more than 3 standard deviations from the mean for the 10 specimens.
4. When a retest is required, no individual specimen's percent mass loss in the second set of specimens shall deviate from the mean value by more than 3 standard deviations calculated for the second set.
5. When a sample does not demonstrate passing performance in accordance with all of the conditions indicated above, the material shall be recorded as having failed Test Method 1.

Photo Appendix:



SGS authenticate the photo on original report only

*** End of Report ***



This document is issued by the Company subject to its General Conditions of Service printed overleaf, available on request or accessible at <http://www.sgs.com/en/terms-and-conditions.aspx> and, for electronic format documents, subject to Terms and Conditions for Electronic Documents at <http://www.sgs.com/en/terms-and-conditions/terms-e-document.aspx>. Attention is drawn to the limitation of liability, indemnification and jurisdiction issues defined therein. Any holder of this document is advised that information contained herein reflects the Company's findings at the time of its intervention only and within the limits of Client's instructions, if any. The Company's sole responsibility is to its Client and this document does not exonerate parties to a transaction from exercising all their rights and obligations under the transaction documents. This document cannot be reproduced except in full, without prior written approval of the Company. Any unauthorized alteration, forgery or falsification of the content or appearance of this document is unlawful and offenders may be prosecuted to the fullest extent of the law. Unless otherwise stated the results shown in this test report refer only to the sample(s) tested and such sample(s) are retained for 30 days only.

Attention: To ensure the authenticity of testing information report & certificate, please contact us by telephone: (86-755) 8387 1442 or e-mail: Chn.China@sgs.com

No. 301, Sunlight Road, 2 Block, Sunlight Industry Zone, Anji County, Zhejiang Province, China 313300 t (86-572) 5018025 f (86-572) 5018029 www.sgs.com.cn
中国·浙江·安吉县阳光工业园二区阳光大道301号 邮编: 313300 t (86-572) 5018025 f (86-572) 5018029 e sgs.china@sgs.com

Member of the SGS Group (SGS SA)

CERTIFIED FLAMEPROOFING

17 NORTH INGELORE COURT

SMITHTOWN, NY 11787

800 590-5530

CERTIFIED FLAMEPROOFING.COM

CERTIFICATE OF FLAME RESISTANCE

Certificate Holder: Paul Britten Inc.
743 5th Avenue, New York, NY 10022

For: Public Access Items as Listed

Certificate Date: May 16, 2022

Expiration Date: May 16, 2023

Certificate Number: 226501

This is to certify that in accordance with NYC Fire Code 805 and NYC Fire Regulations 805-01, the following items were treated on the Certificate Date above with a fire retardant chemical approved with the NYC Fire Department. This chemical (Firetect's Fire-Poof) is NFPA 701 approved for use on the materials listed below:

Items:

One (1) Mesh Banner: 1 x (18'x52').

Registry No: NYCFD Cert of Approval 5687

Any washing, cleaning or alteration of this material will void this certificate. I, Edward Fallon, am certified by the City of New York with a Fitness Certificate # 61488599 which expires on September 19, 2022.

Sworn before me this

16th

day of

May 2022

Gloria F. Fallon

Signed & Attested to

Edward Fallon

Edward Fallon

GLORIA F. FALLON
NOTARY PUBLIC, STATE OF NEW YORK
Registration No. 01FA6381079
Qualified in Nassau County
Commission Expires Sept. 24, 2022



FIRE DEPARTMENT, CITY OF NEW YORK-BUREAU OF FIRE PREVENTION
9 METROTECH CENTER, BROOKLYN, N.Y. 11201-3857

CERTIFICATE OF

FITNESS

(A)

CERTIFICATE NUMBER	ISSUED	EXPIRES	FEE PAID
61488599	07/24/19	09/19/22	15.00

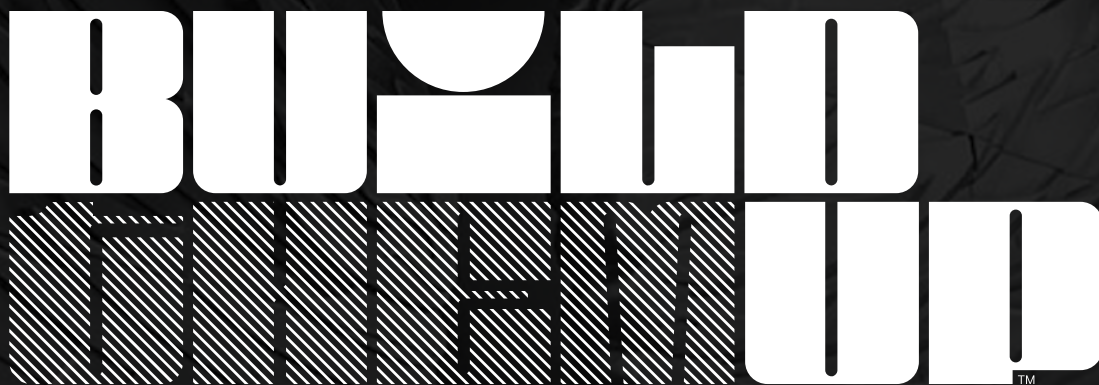
TYPE: C15 SUPERVISE FLAMEPROOFING
NAME: FALLON EDWARD L.
ADDRESS: 17 N INGELORE CT
SMITHTOWN NY 117870000

SOCIAL SECURITY NO.	BIRTH DATE	SEX	HEIGHT	WEIGHT
PRIVATE	07/04/63	M	5'09"	145 LBS
HAIR	EYES	CITY EMPLOYEE		
BLOND	BLUE	NO		

EMPLOYER:

WORK ADDRESS:

SIGNATURE Edward L. Fallon



BRITTEN BUILDS UP **PEOPLE, BRANDS** AND **COMMUNITIES** WITH
HIGH-QUALITY DISPLAYS, BANNERS, AND EVENT SOLUTIONS.

BRITTENINC.COM / 855.763.8203