

ASSEMBLY AND INSTALLATION INSTRUCTIONS

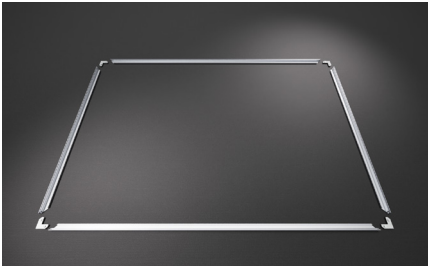
WHAT YOU'LL NEED

- + Extrusion pieces (quantity will vary by frame size)
- + Corner Pieces with screws x4
- + Corner Pieces no screws x4
- + Screwdriver *not included

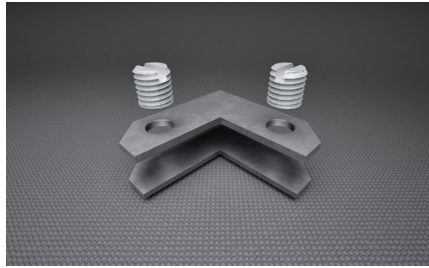
ASSEMBLE FRAME

- + Unpack all the frame components and lay out the (4) aluminum frame segments on the floor in a rectangular configuration with the channels facing upward.
- + Grab two corner (L-shape) pieces, one with screws and one without.
- + Slide the corner piece into the channels of two frame segments to make a corner.
- + Repeat the above step for all 4 corners, then fasten screws with a screwdriver.

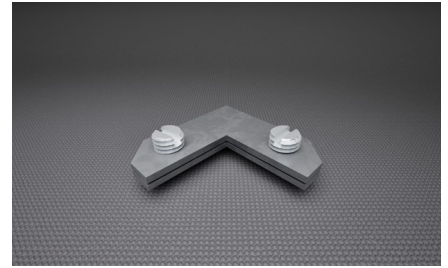
1



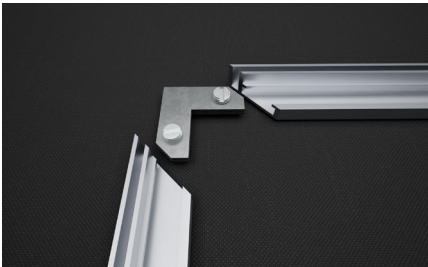
2



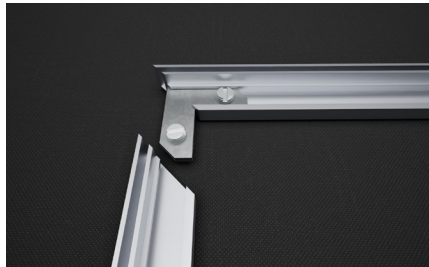
3



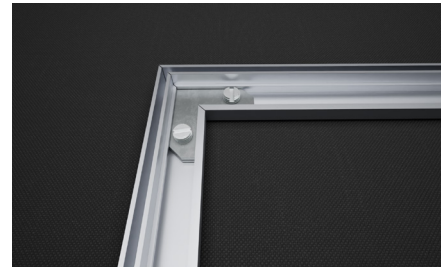
4



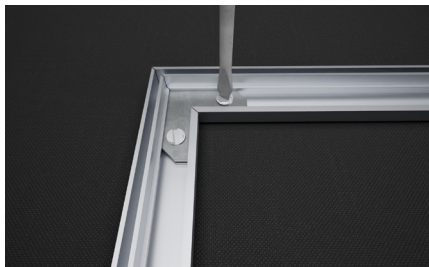
5



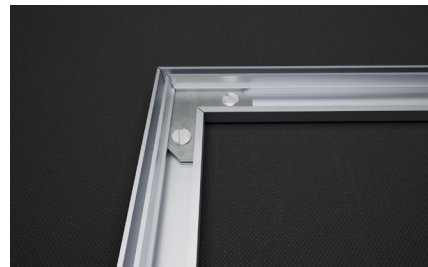
6



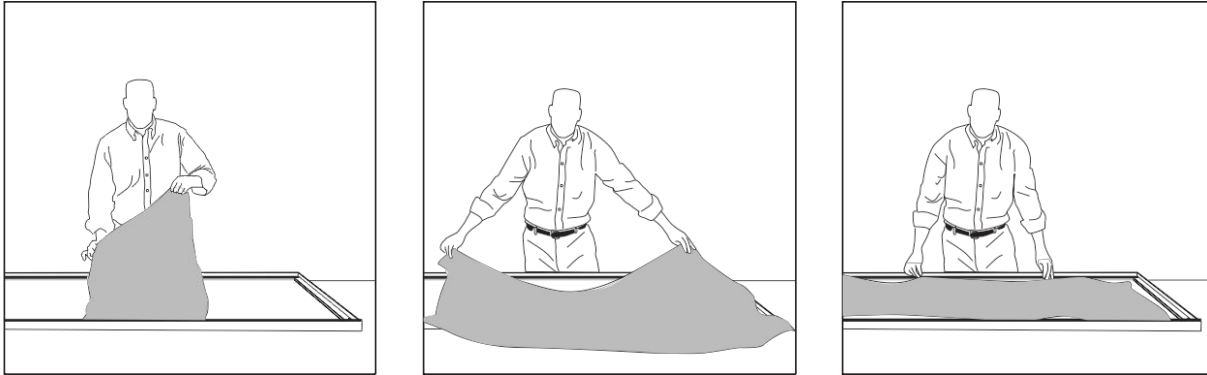
7



8

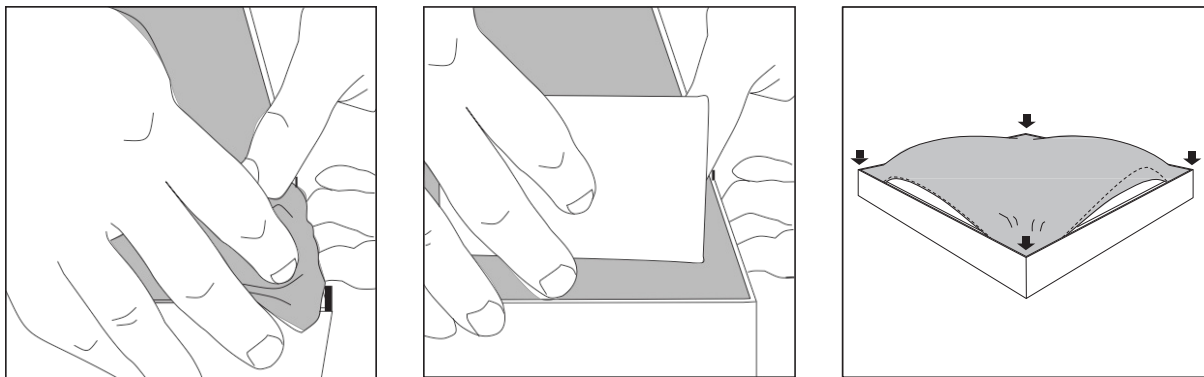


STEP 1



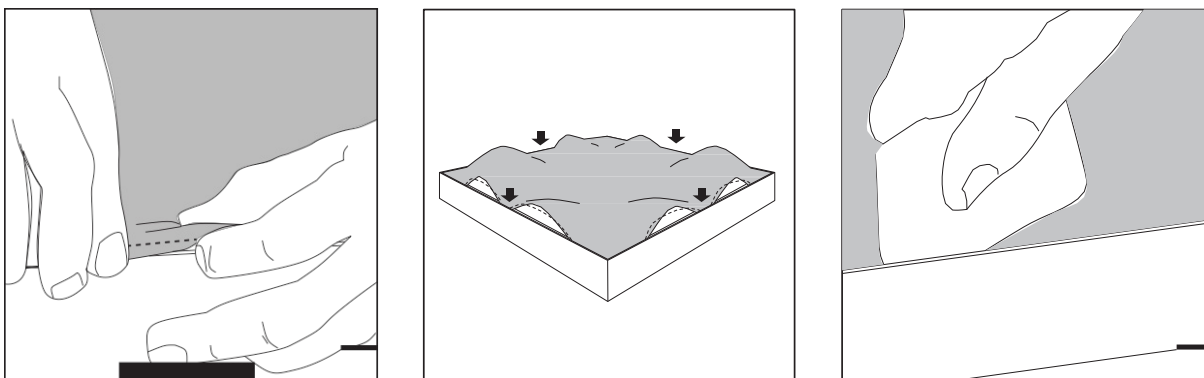
Lay the frame flat on the floor. Please note the banner may appear smaller than the frame; it is produced this way to get a good fit and stretch. Our fabricators measure each banner before it leaves our shop to ensure that it was produced at the correct size.

STEP 2



Install the corners of the SEG frame first. Push the silicone beading in perpendicular to the frame with your fingers and then use a card to push in the fabric to give it a tight fit. Make sure each corner is snug before continuing.

STEP 3



Once all the corners are inserted, press the beading into the center of the channel and work each side out towards the corners. This will make sure there is little to no wrinkling in the fabric. Use a card to make sure beading is tight in the channel.