

Custom sizes to fit your special requirements.

Anodized aluminum can be custom painted to your color preference.

Engineered backlit vinyl and maximum print density to provide a beautiful presentation with full color saturation.

WALL-MOUNTED, BACKLIT LED DISPLAY, FOR INTERIOR OR EXTERIOR USE

BriteWall is the industry's leading backlit display system. The frame is available in a variety of sizes and finishes, while a spring-tensioned component makes installing and swapping banners easy. This LED light box system uses a modest one third the power of traditional light box systems and lasts three times as long.

TOP PRODUCT BENEFITS

- 1 **Bright, energy efficient LED** panels provide balanced illumination at a stunning 5700° K full spectrum output.
- 2 **Save money** with low, efficient power consumption of only 6.5 watts/sq ft.
- 3 Easy to swap out vinyl graphics allows for a **fresh look when you want it.**
- 4 Great for interior and exterior use. **Special coating and UV protected backlit vinyl** provides weather-resistance for exterior application.
- 5 Highly customizable frame. **Choose from a variety of sizes and finishes.**



Voltage	120 or 227 VAC input, 20 amp circuit
Voltage output	24V DC constant
Brightness	11,000 Lux (Lumens/ft ²)
LED lifespan	50,000 hours (Twice as long as traditional light box systems)
Weight (with banner)	4 lbs/sq. ft.
Warranty	3 years
UL listed	US & Canada UL 48 Electrical Signs File #E362117

STANDARD SIZES

Standard sizes are detailed below. In addition to these standard sizes, BriteWall can be custom configured to nearly any size up to 12' H x 16' W. For larger sizes, please inquire about our large format Ovio BriteWall systems.

Product	Actual Unit Size	Unit Depth	Frame Width	Graphic Size	Live Area	Net Weight
BriteWall 4x4	49"h x 49"w	3.3"	3.5"	45.375" x 45.375"	41"h x 41"w	64 lbs.
BriteWall 4x6	49.5"h x 70"w	3.3"	3.5"	45.875" x 66.375"	41.5"h x 62"w	96 lbs.
BriteWall 5x5	59.5"h x 59.5"w	3.3"	3.5"	55.875" x 55.875"	51.5"h x 51.5"w	100 lbs.
BriteWall 6x6	70"h x 70"w	3.3"	3.5"	66.375" x 66.375"	62"h x 62"w	144 lbs.
BriteWall 8x8	91"h x 91"w	3.3"	3.5"	87.375" x 87.375"	84"h x 84"w	256 lbs.
BriteWall 10x10	115"h x 115"w	3.3"	3.5"	111.375" x 111.375"	107"h x 107"w	480 lbs.
BriteWall 12x12	138.25"h x 138.25"w	3.3"	3.5"	134.625" x 134.625"	130.25"h x 130.25"w	576 lbs.
Custom	Up to 144"h x 192"w	3.3"	3.5"	Custom	Custom	Custom



Britten produces everything in-house, making planning and coordinating your project easier than ever. We print directly to polyester materials with eco-friendly inks for Infinity frames (and many other applications). Contact Britten to order media at 855.763.8205.

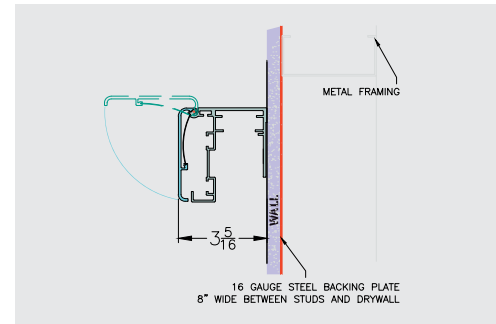


How is the BriteWall mounted? Unit must be mounted to a solid, complete surface (e.g., a wall of appropriate construction of where the unit is to be mounted). Can be mounted to wood, brick, block, metal, EIFS surfaces.

When should the surface be prepared? To help with your planning process and project timeline, all wall preparation should be made prior to the arrival of BriteWall and the Britten install crew.

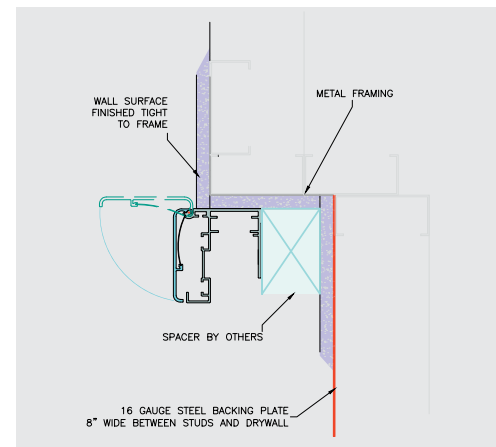
SURFACE MOUNT

- Easiest to install; requires little to no wall preparation or finishing
- Frame extends 3.3" off the wall



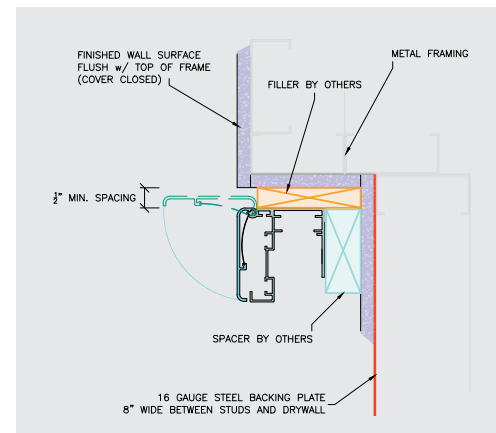
INSET MOUNT

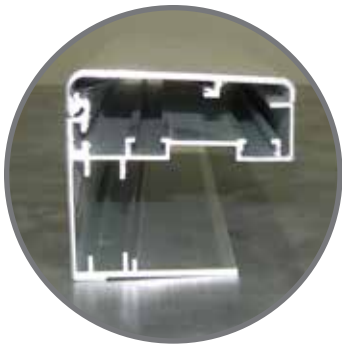
- Inset into wall cavity
- Cleanest finish to the frame (no gap)
- Note: In this application, BriteWall unit should be mounted first before finishing the wall to the unit



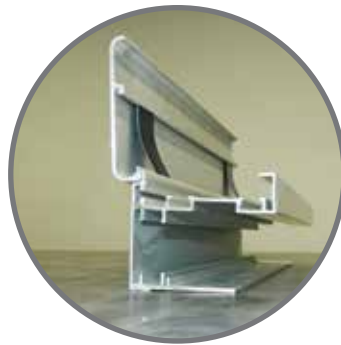
FLUSH MOUNT

- Requires 1/2" gap to allow frame cover to flip open
- Frame front (when closed) is flush with wall
- For a clean finish, a filler can be added post-install to close the cavity between the unit and wall





Frame cover closed
(side view)



Frame cover open
(side view)



Spring components result in
perfectly-tensioned banners.



Evenly-spaced LEDs result
in balanced illumination.

DESIGN TEMPLATES

Each OVIO Frame size will be provided with its appropriate media design template.

WARRANTY

Britten Inc. offers a conditional one year warranty against product design and manufacturing assuming proper installation and proper operational conditions. During the warranty period, Britten Inc. will repair or replace the unit. The warranty only applies to the original purchaser and is in lieu of all other warranties expressed or implied for a period of one year from the date of purchase. Britten Inc. will not warranty the following: SHIPPING; Customer is to bear all shipping expense to return the unit to Britten Inc. LABOR; associated with the removal or installation of the unit. DAMAGE; caused by misuse, neglect abuse, accidents, alterations, corrosive environments, and any other abnormal service conditions.

Claims against the warranty must include:

- Pictures of the installation
- Written description of the problem
- Return Material Authorization issued by Britten Inc.



Britten produces everything in-house, making planning and coordinating your project easier than ever. We print directly to polyester materials with eco-friendly inks for Infinity frames (and many other applications). Contact Britten to order media at 855.763.8205.